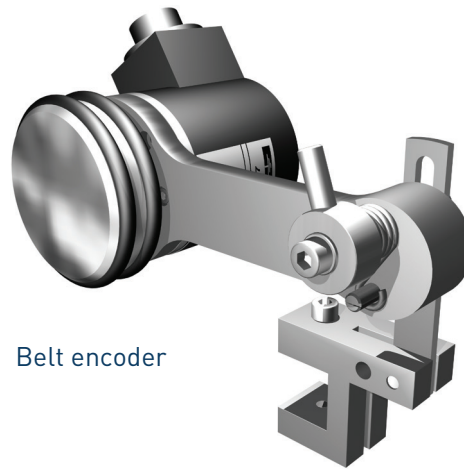


Shaft encoder



Belt encoder

## Incremental encoder

For speed readout in adhesive application programmers

### PRODUCT DESCRIPTION

Incremental encoder of 100 pulses per revolution for automatic production line speed readout, ensuring perfect adhesive application based on the distances of the selected format on the pattern controller.

Easy to install, with a tilting base, it can be mounted in a number of different positions. This guarantees perfect support, using the pressure of the spring, on the conveyor.

It can be adapted to the machine's transmission mechanism shaft with its flexible coupling.

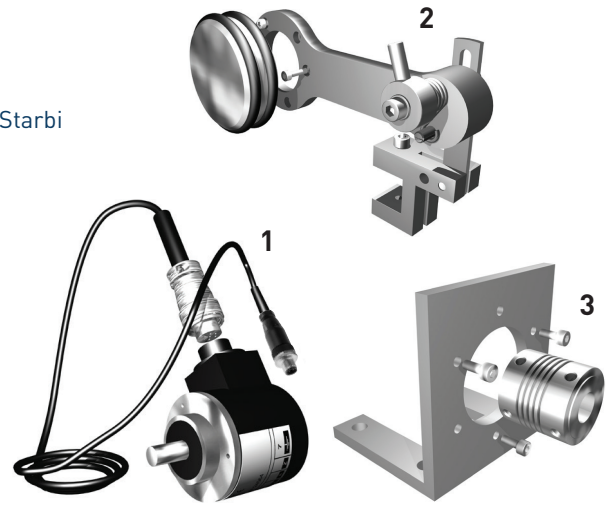
### TECHNICAL FEATURES

Resolution (Pulsos/Rev.) .....	1000 (P/rev)
Voltage .....	24 VDC
Max. switchable current .....	50 mA
Output configuration .....	PNP
Max. frequency of use .....	100KHz
Shaft diameter (mm) .....	Ø10 g6
Protection level .....	IP 64
Max. speed .....	6000 rpm
Shaft loads admitted .....	200N axial, 200N radial
Vibration .....	10G 10- 2000 Hz
Operating temperature .....	0- 60 °C

## RANGE OF PRODUCTS

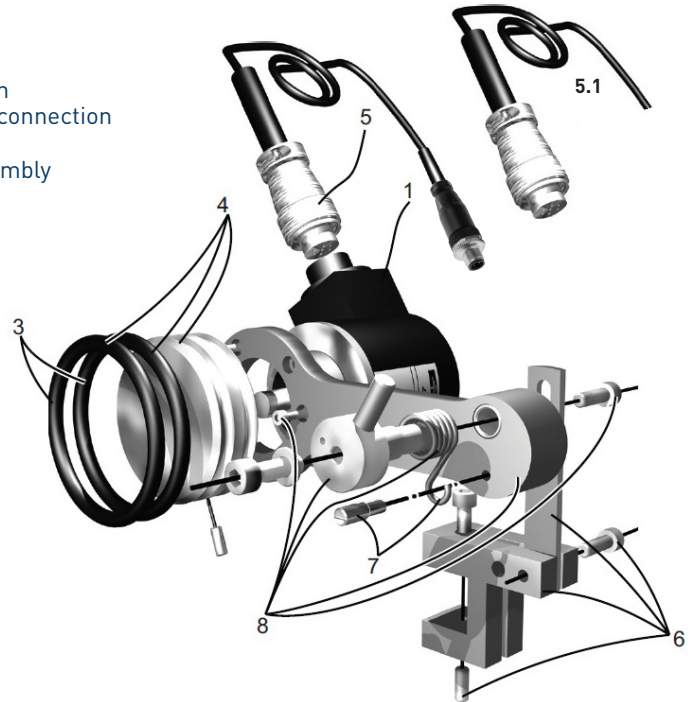
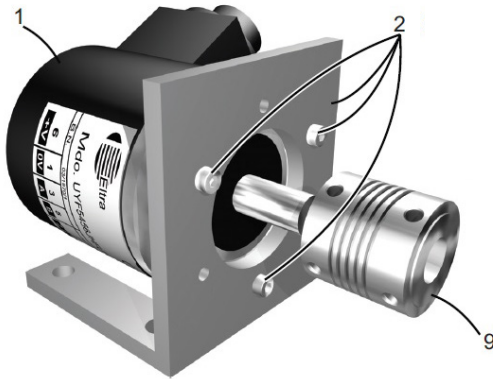
The incremental encoder can be used with Focke Meler Starbi programmer:

1	150030510	PNP encoder 5/30 VDC (1000 pulses) with cable for Starbi
2	25010010	Complete encoder conveyor support.
3	25010011	Complete encoder shaft support.



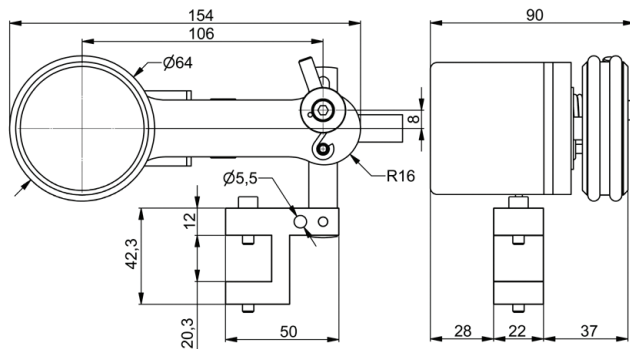
## ACCESSORIES

1	150030500	1000 pulses incremental encoder
2	25010015	Angular encoder shaft support
3	25010016	Encoder wheel gasket coupling
4	25010017	Encoder wheel
5	150030430	Encoder cable PNP 3m, M12 connection
5.1	150030780	Encoder cable PNP 3m terminal block connection
6	25010019	Encoder support coupling flange
7	25010020	Encoder stops and spring support assembly
8	25010021	Encoder conveyor support
9	25010022	Encoder flexible coupling

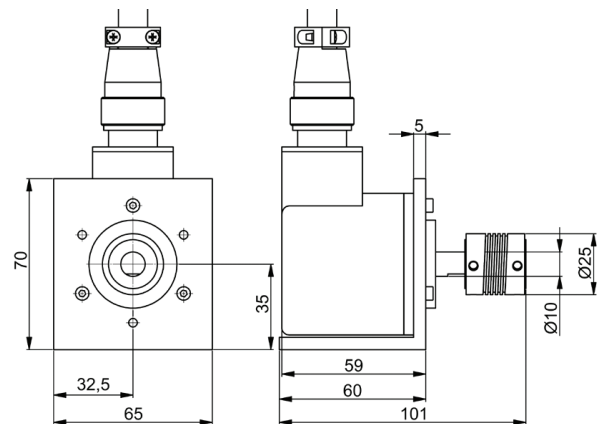


## DIMENSIONS

Belt encoder



Shaft encoder



For more information speak with your Focke Meler representative:

**meler** 

Focke Meler Gluing Solutions, S.A.  
Pol. Arazuri-Orkoien, c/B, nº3 A  
E-31170 Arazuri - Navarra - Spain  
Phone: +34 948 351 110  
info@meler.eu - [www.meler.eu](http://www.meler.eu)

Focke Group

CE



Management System  
ISO 9001:2015



[www.fbv.com](http://www.fbv.com)  
ID: 9105530748